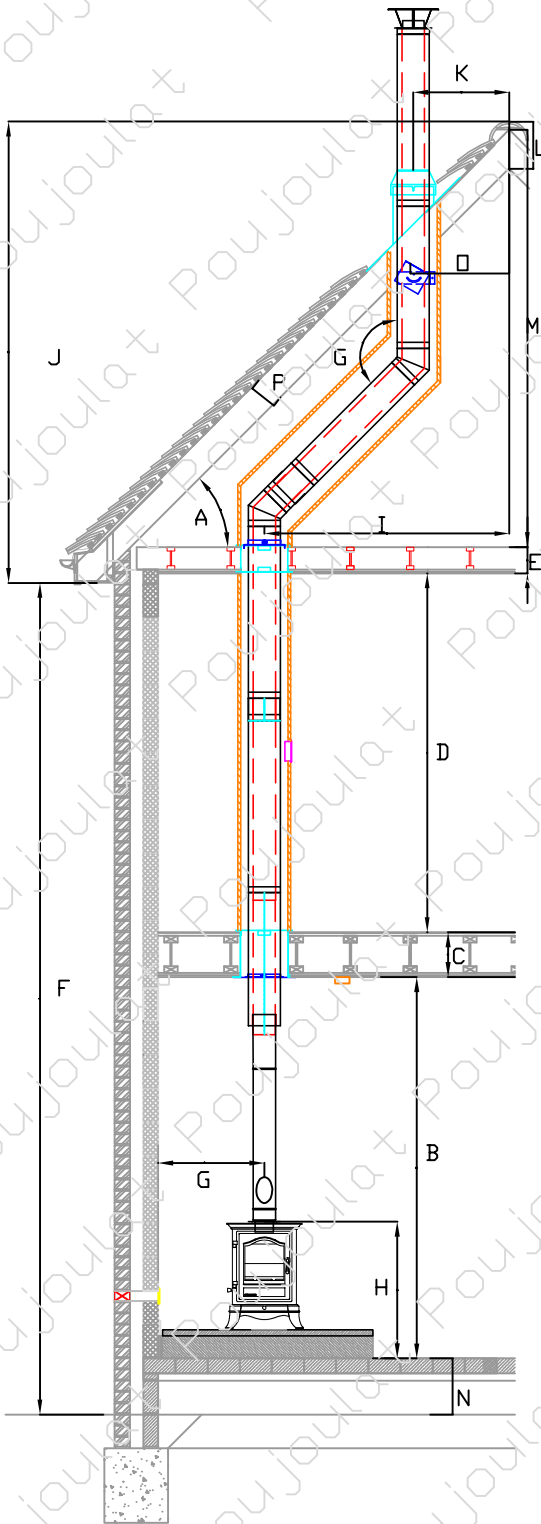


Typical Internal Installation Survey Sheet



- Type of building? (bungalow/2 storey etc)?.....
- Built pre or post 2008?.....
- Roof pitch ° (A)?.....
- Roof Covering?
- Slate?... Ceramic?... Concrete?... Other?.....
- Height of ground floor (B) ?.....
- Height of ground floor void (C)?.....
- Height of 1st floor (D)?.....
- Height of 1st floor void (E)?.....
- Height of 2nd Floor(M)?.....
- Height of 2nd Floor void?.....
- Height from ground level to soffit (F)?.....
- Distance from center of flue to ridge (I)?.....
- Height from soffit to ridge (J)?.....
- Distance from flashing to ridge (K)?.....
- Height from rafter to ridge (L)?.....
-
- Distance from roof penetration to ridge (M)?.....
- Distance from ground level to outside floor level (N)?.....
-
- Thickness of roof space(P)?.....
- Appliance
- Make/Model?.....
- Height?.....
- Top or Rear outlet?.....
- Outlet Internal Diameter?.....
- Minimum distance from outlet centre to wall?.....
- Connection Pipe
- Connection to appliance
- Vitreous enamel or Therminox?.....
- If Therminox - Stainless steel or what colour?.....
- Use EDP pipe connector?.....
- Colour (white/black)?.....
- Use P Adaptor?.....
- Ceiling solid fire stop?.....
- White or black?.....
- Air Vent required?.....
- Draft stabiliser required?.....
- Chimney
- Diameter?.....
- Stainless steel, Galvanised or specify colour?.....
- Offset required?.....
- Offset angle (G)?.....
- Offset length (H)?.....
- Termination Position
- Through Pitch?.....
- Through Ridge?.....
- Terminal Type
- Open weathertop?.....
- Cone Top?.....
- Rain Cap?.....
- Aspirator?.....
- Flashing Type
- STI?.....
- Chimney Stack?.....
- Lead?.....
- Aluminium?.....
- Stainless?.....
- Accessories
- Fire Cement..... Smoke Pellet..... Sealant.....
- CO2 Detector..... Spray Paint.....